

**Your DiVosta and Company Luxury Two Bedroom, Two-And-One-Half Bath Luxury Townhome Combines Gracious Indoor/Outdoor Living, Superb Energy-Conscious Construction And Quality Appointments.**

**IN THE KITCHEN:**

- Deluxe appliance package includes:
  - Frost-free refrigerator/freezer with icemaker
  - Range with self-cleaning oven
  - Microwave oven
  - Dishwasher
- Garbage Disposal
- Double stainless steel sink
- Range hood with exhaust fan
- Contemporary mica cabinetry, countertops with full backsplash

- Serving counter between kitchen and dining room area
- Ceramic tile floor
- Screened sliding glass door with vertical blinds opening onto courtyard
- Breakfast nook with large window and mini-blinds

**IN THE DINING AREA:**

- Wall-to-wall carpeting
- Electrical outlet in ceiling with switch

**IN THE LIVING ROOM:**

- Large screened windows on end wall and patio wall providing cross ventilation
- Mini-blinds
- Wall-to-wall carpeting

- Carpeted staircase with wood railing

**IN THE FIRST-FLOOR HALF-BATH:**

- Vanity top with sink
- Large mirror with decorative light
- Laundry area with full-size washer, dryer and overhead cabinets
- Ceramic tile floor
- Exhaust fan

**IN THE MASTER BEDROOM (#1):**

- Carpeted walk-in closet with mirrored doors
- Modular closet organizer with adjustable shelves and hanger rods
- Screened window with mini-blinds
- Wall-to-wall carpeting

**IN THE MASTER BATH (#1):**

- Private bath with
  - Tile shower stall with glass door
  - Ceramic tile floor
  - Double sink in vanity
  - Wall-to-wall mirror over vanity
  - Decorative lighting
  - Screened window

**IN THE MASTER BEDROOM (#2):**

- Screened window with mini-blinds
- Wall-to-wall carpeted closet with mirrored doors
- Modular closet organizer with adjustable shelves and hanger rods
- Wall-to-wall carpeting

**IN THE MASTER BATH (#2):**

- Private bath with ceramic tiled walls in tub/shower area
- Ceramic tile floor
- Large mirror with decorative lighting over vanity
- Exhaust fan

**SPECIAL FEATURES:**

- Under staircase storage
- Central vacuum system
- Large-capacity electric water heater
- Fire extinguisher and smoke detector
- Central air-conditioning and heating
- Thermostat control
- Humidistat control
- Folding stairs to attic
- Reinforced concrete construction
- Two parking spaces per residence

**YOUR PRIVATE PATIO FOR OUTDOOR FLORIDA LIVING:**

- Over five foot-high private fence
- Large courtyard with scored concrete deck
- Outside storage area with gate
- 110V weather-proof outlet
- Hose bib

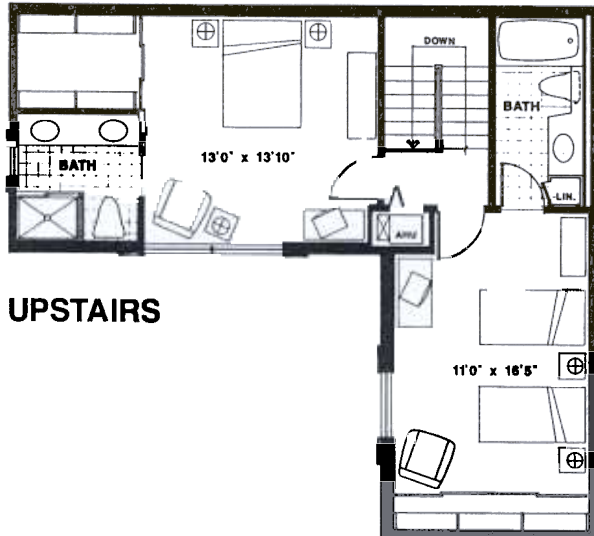
**YOUR DIVOSTA AND COMPANY RESIDENCE IS ENERGY-EFFICIENT, AND THAT MEANS A COST-AND-ENERGY SAVINGS FOR YOU**

**sq. ft.**

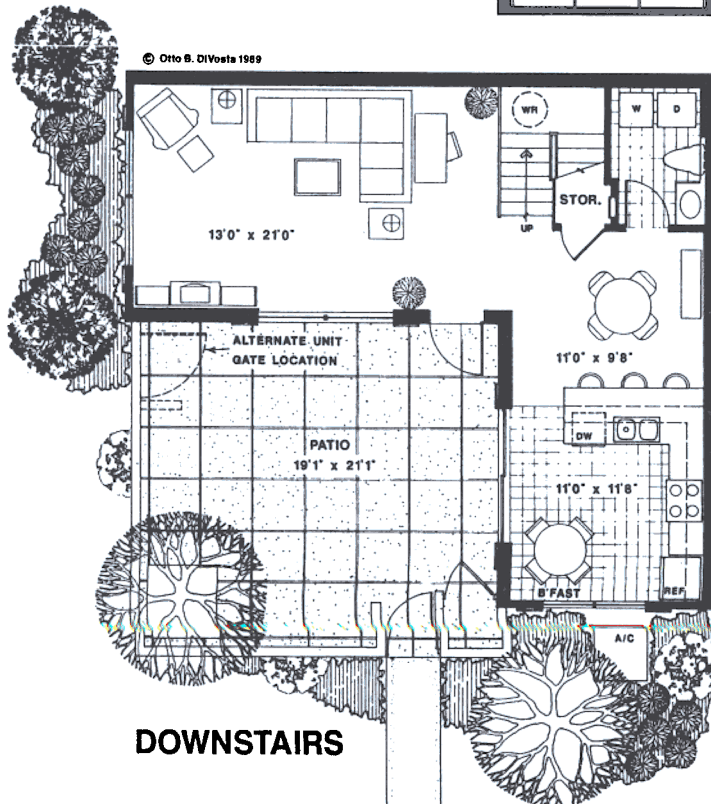
**a/c living 1362**

**patio 402**

**total 1764**



**UPSTAIRS**



**DOWNSTAIRS**

**DiVOSTA**  
AND COMPANY

Preliminary Floor Plan. All dimensions are approximate. The developer reserves the right to change and/or alter materials, specifications, features, dimensions, designs, landscaping and prices without notice. No landscaping is provided within patio area.

ORAL REPRESENTATIONS CANNOT BE RELIED UPON AS CORRECTLY STATING THE REPRESENTATIONS OF THE DEVELOPER. REFER TO THE CONTRACT AND THE OTHER HOMEOWNER DOCUMENTS FOR CORRECT REPRESENTATIONS.